



Everyday Solutions®

EveryDispatcher™ | Web-based, real-time vehicle tracking dashboard

Give dispatchers and others control of their entire fleet with more vehicle tracking options than ever before.

CHALLENGE

To track and manage a fleet of vehicles and resolve issues such as break-downs - efficiently, safely and cost effectively.

SOLUTION

Deploy a Web-based dashboard application that updates vehicle status and location information every 30 seconds.

KEY CAPABILITIES

Status Grid

The Status Grid updates the Status, Heading, Speed and Route Distance for a selection of vehicles every 30 seconds.

The grid can be sorted by any column by clicking on the column heading. Clicking on the Status column sorts vehicles, first by group and then within the group by vehicle ID.

Track	Vehicle	Time	Status	HD	Speed	Route Dist
	3894 41	10:02 AM	En Route	W	17	47.0
	3401	10:02 AM	En Route	S	7	17.6
	3409	10:02 AM	En Route	E	23	29.0
	3412	10:03 AM	En Route	SW	11	31.1
	3766 34	10:02 AM	En Route	NW	2	40.5
	3965 41	10:02 AM	En Route	SE	7	34.9
	3459 17	9:23 AM	Stop-Extended	SW	0	38.5

The HD column displays the vehicle heading. The icon on the map also displays an arrow indicating the direction in which the vehicle is moving.

“The display performance of EveryDispatcher™ is incredible. I can see status and location updates for 100’s of school buses in seconds. I can also select and view information for a single bus or sub-fleets depending on the issue of the moment.”

Status Sorts

There are 3 sort groups within the Status column.

Driving: En Route, Stop-Red, Stop-Yellow, Stop-Off, Stop-on

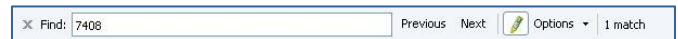
Stopped: Stop Extended

Inactive: Beacon, Key, Invalid GPS, No Info,



Vehicle is used to select vehicles to display on the Status Grid.

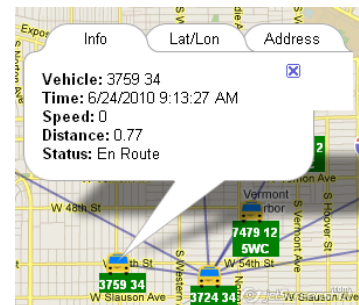
Search is used to search for a vehicle and place its information at the top of the Status Grid.



You can also press *Ctrl-F* to activate the Find command to quickly search for vehicles within the Status Grid.

Vehicle Information

Click on any vehicle and view detailed status information such as speed, etc. and location information including the street address.

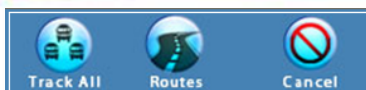


Everyday Solutions, The Only Complete Student Transportation Information Solution

Every **Bus** Counts!

Every **Student** Counts!

Every **Dollar** Counts!



Track All displays the current location of all vehicles on Google Maps™ selected in the Status Grid. Press the button on the vehicle row under the **Track** column in the Status Grid to display a single vehicle on Google Maps.

Select **Routes** to display the path that a vehicle has traveled during a specified time on that day.

Press **Cancel** to stop the current **Tracking** or **Routes** operation.



The *Nearest Vehicles From Selected* **Vehicle** is used to find and display the closest vehicles based on the **Distance to** value from the selected vehicle on Google Maps.

The *Nearest Vehicles From Selected* **Map Pin** is used to find and display on Google Maps, the closest vehicles based on the **Distance to** value from the selected point on the map.

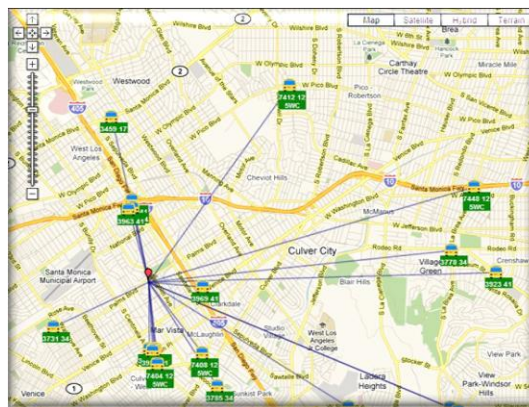
Vehicle and **Map Pin** reference the search radius value entered in the **Distance to** box.

Vehicle	Distance	Status	Time	HD	Speed
7412 12 SWC	0.73	Stop-Extended	7:56 AM	SE	0
7414 12 SWC	0.75	Stop-Extended	7:30 AM	SE	0
7408 12 SWC	0.79	Beacon	11:50 AM		
3994 41	0.79	Stop-Extended	9:38 AM	NW	0
3785 34	0.79	Stop-Extended	7:40 AM	S	0

List of Nearest Vehicles From Selected Vehicle

*“When a school bus breaks down during the morning or afternoon rush, I need to resolve the situation quickly. **EveryDispatcher™** enables me to immediately locate and select the disabled bus on the map and find the closest bus(es) to help.”*

Map Types: You may click *Map*, *Satellite*, *Hybrid*, or *Terrain* at any time to change the type of map displayed. *Map* displays a road map and is the default display. *Satellite* displays a satellite image. *Hybrid* displays satellite imagery with a roadmap overlay.



Vehicles from Selected Point on Google Maps

BENEFITS:

- View fleet status information in a real-time dashboard that is updated every 30 seconds
- Locate selected buses on a Google Map in real-time
- Get quick answers about your fleet in seconds.

PREREQUISITES: EveryPoint™

COMPONENTS: 735-10016 License, EveryDispatcher™ or 731-10016 Subscription, EveryDispatcher™ (SaaS)

Everyday Solutions, Inc. 100 Discovery Way Suite 220 Acton, MA 01720 978 371-1550 www.everyday-solutions.com

Everyday Solutions®, EveryPoint® and EveryWhere® are registered trademarks and EveryDispatcher™ is a trademark of Everyday Solutions, Inc. Google Maps™ is a trademark of Google Inc.